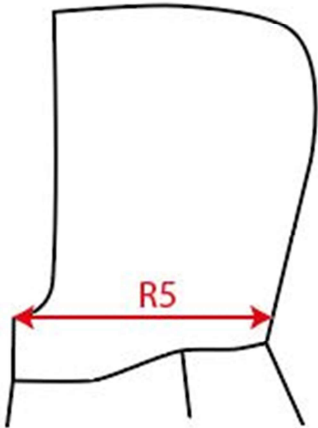
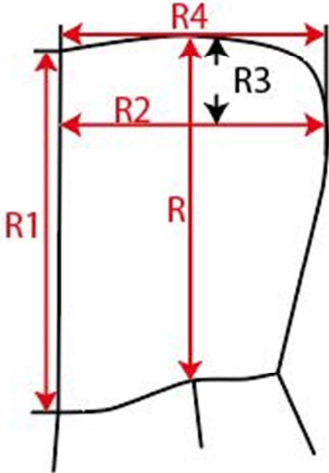
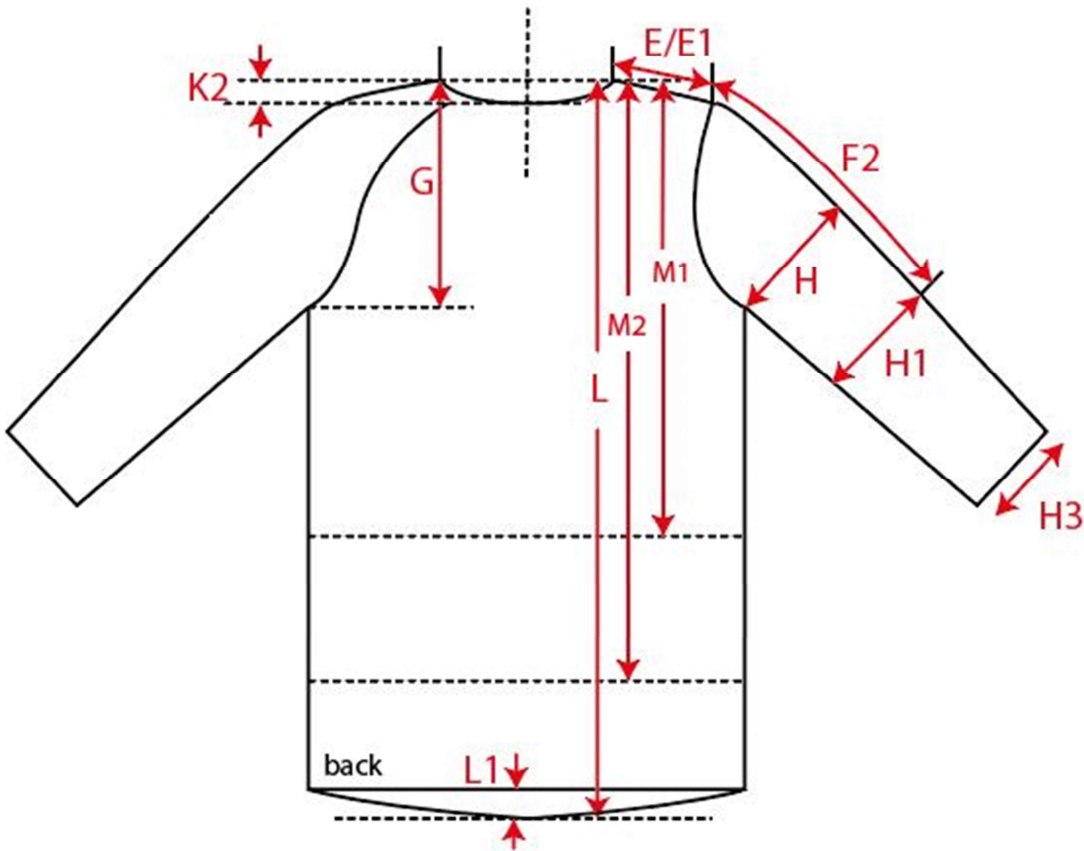


Measurement Sketch



| ORDER | SEASON | CLIENT | BRAND |
|------------|------------|--------|------------------|
| | SS22 | n/a | Build your Brand |
| STYLE CODE | STYLE NAME | GENDER | SUPPLIER |
| BY016 | Windrunner | Male | 72503 |



Style Measurement View for Client



| ORDER | SEASON | CLIENT | BRAND |
|------------|------------|--------|------------------|
| | SS22 | n/a | Build your Brand |
| STYLE CODE | STYLE NAME | GENDER | SUPPLIER |
| BY016 | Windrunner | Male | 72503 |

Basic Measurement Chart

06

XS-6XL Men

blanco MC Tops Men XS-6XL

Base Size

M

| - | Measurements (values) | S | M | L | XL | XXL | 3XL | 4XL | 5XL | Tol. +/- | Comment |
|---|--------------------------------------|------|------|------|------|------|------|------|------|----------|---------|
| M | front length from HSP | 70,0 | 72,0 | 74,0 | 76,0 | 78,0 | 79,0 | 80,0 | 81,0 | 1,0 | |
| A | 1/2 chest width | 52,0 | 55,0 | 58,0 | 61,0 | 64,0 | 68,5 | 73,0 | 77,5 | 1,0 | |
| D | 1/2 hem width | 42,0 | 45,0 | 48,0 | 51,0 | 54,0 | 58,5 | 63,0 | 67,5 | 1,0 | |
| F | sleeve length from shoulder (set in) | 68,6 | 69,0 | 69,4 | 69,8 | 70,2 | 70,6 | 71,0 | 71,4 | 1,0 | |